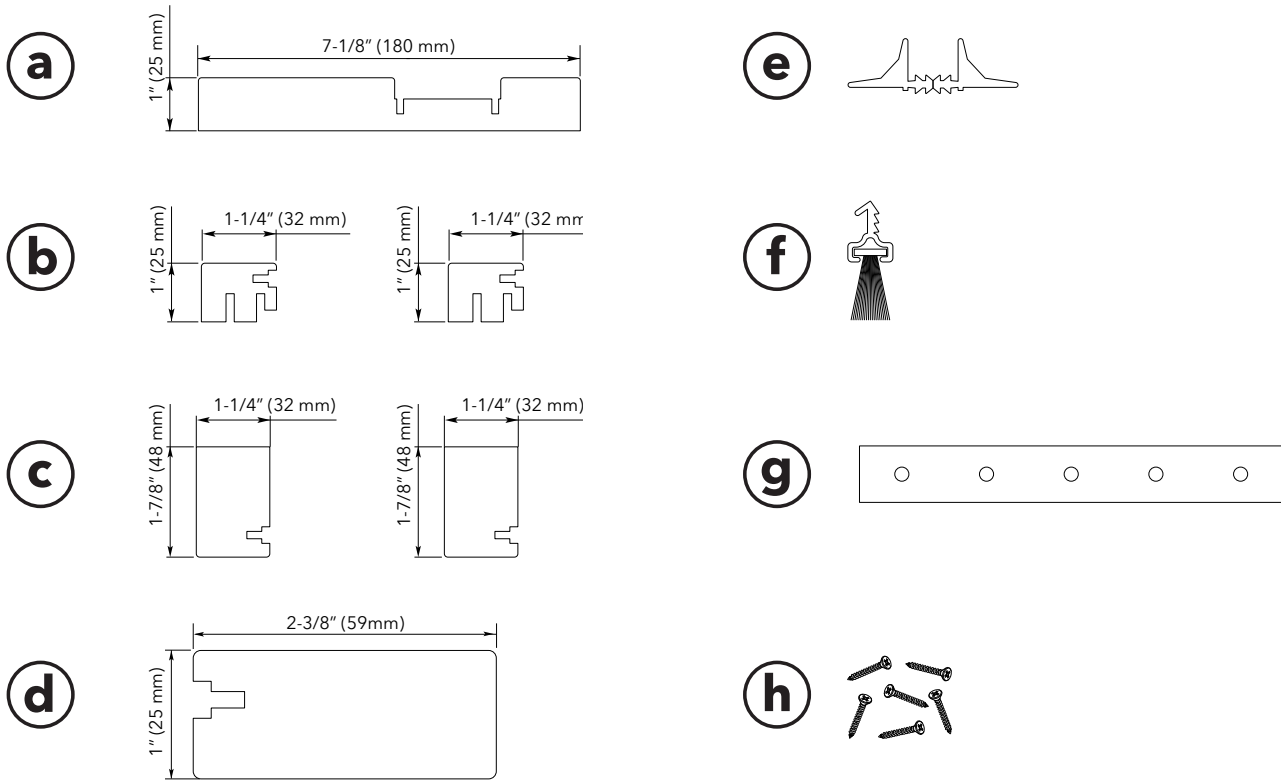


## INSTRUCTIONS TELESCOPIC JAMBS

**Follow these instructions carefully.**

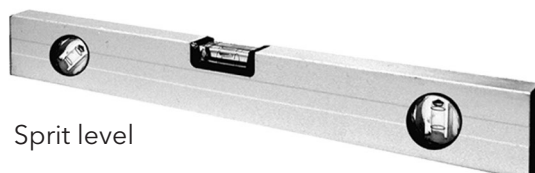
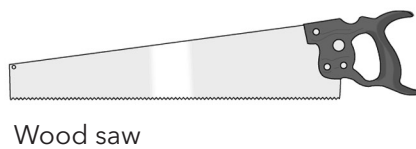
Wear all appropriate clothing, goggles, etc when assembling this product. Use appropriate tools and support required. ECLISSE declines any responsibility if these instructions are not scrupulously followed.

### CONTENTS



<b>a</b> Face Jamb	<b>Qty: 1</b>	<b>e</b> Bumpers 1 divides into 2	
<b>b</b> Split jamb	<b>Qty: 2</b>	<b>f</b> Brushes	<b>Qty: 8</b>
<b>c</b> Top Head jamb	<b>Qty: 2</b>	<b>g</b> Brackets	<b>Qty: 4</b>
<b>d</b> Supplementary jamb	<b>Qty: 2</b>	<b>h</b> Pack of screws	<b>Qty: 1</b>

### Tools required



## Fitting Telescopic timber jambs

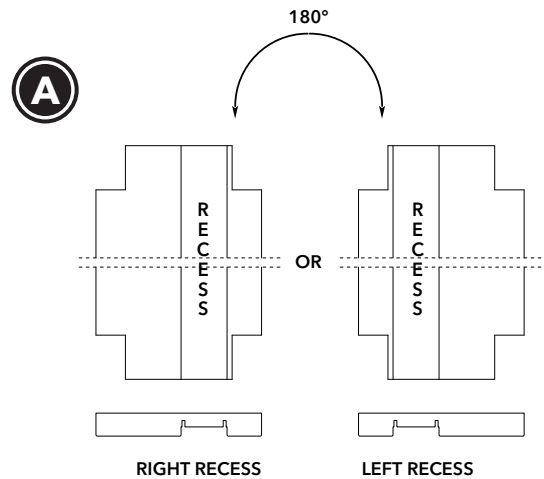
### IMPORTANT:

- IF YOU ARE FITTING A SYNCHRONISATION SYSTEM THEN THIS SHOULD BE DONE BEFORE YOU INSTALL THE JAMBS.
- IT IS EASIER TO PAINT THE JAMBS AND YOUR FACE JAMB BEFORE INSTALLATION
- THE FRAME NEEDS TO BE INSTALLED AT FINISHED FLOOR LEVEL. IF THIS IS NOT POSSIBLE THEN SHIM THE SYSTEM UP TO COMPENSATE.

### STAGE 1 DOOR POST (A) AND REFERENCE GUIDE

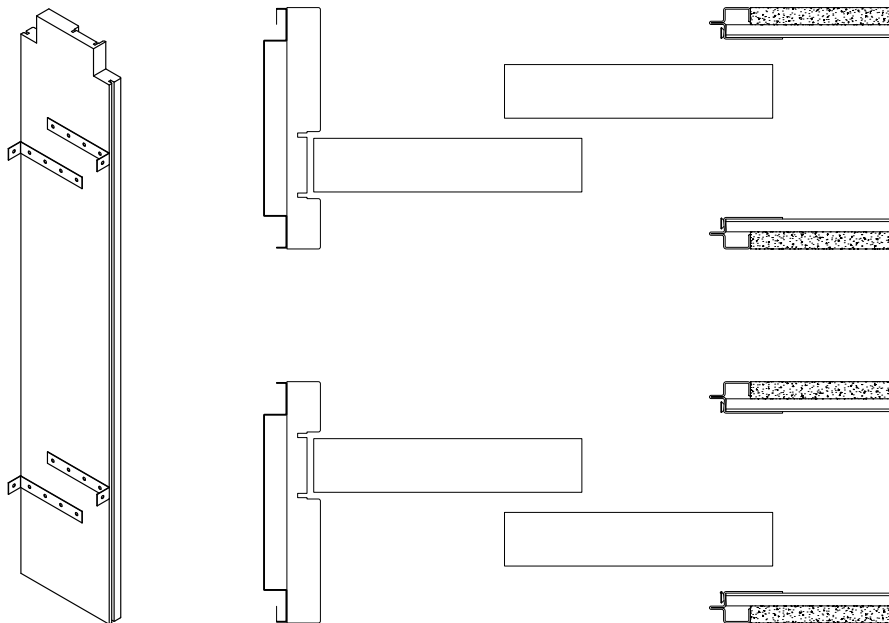
The recess on the face jamb is staggered and each end of the face jamb has the same rabbeted cut so you can have the recess to the left or right hand side just by turning it upside down.

It needs to be cut to size by cutting at the bottom so it is **IMPERATIVE** you identify correctly the bottom end and this depends on which side the recess will be. Please check you have done this correctly as only full Jamb kits are available for purchase.



### B

### FOR REFERENCE DURING INSTALLATION



Measure from the finished floor level to the underside of the aluminium track and cut the door post to that dimension **AT THE BOTTOM END**. Fix the strips G with the supplied screws.

Check the vertical steel door post is perfectly plumb, if it has not been installed according to the ECLISSE instructions and is not plumb then you will need to compensate either by applying more silicone or wedges between the steel post and the wooden one. Place the door post in position (Rabbeted Part on top) and fix the wooden face jamb to the metal doorpost using a good silicone.

Secure the door post with the side screws.

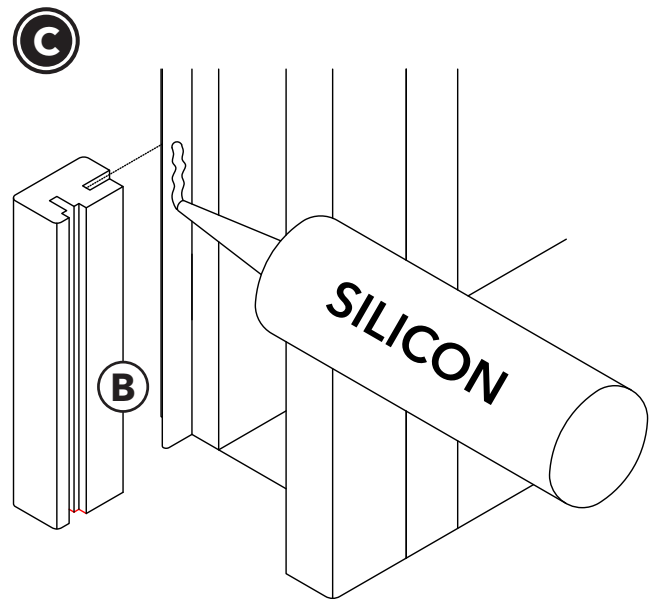
It is **IMPERATIVE** that the wooden door post is perfectly plumb.

Insert the bumpers into the vertical recesses in the door post. Only after Jambbs have been painted and are dry.

## Fitting Telescopic timber jambs

### STAGE 2 POCKET ENTRANCE JAMBS (B)

Using the same dimension as the door post cut the Split Jambs (B) at the NON rebated end. Cut the brushes to the same length and insert into the routed positions on the Split Jambs and attach to the pocket entrance as shown using 4 or 5 blobs of silicon.

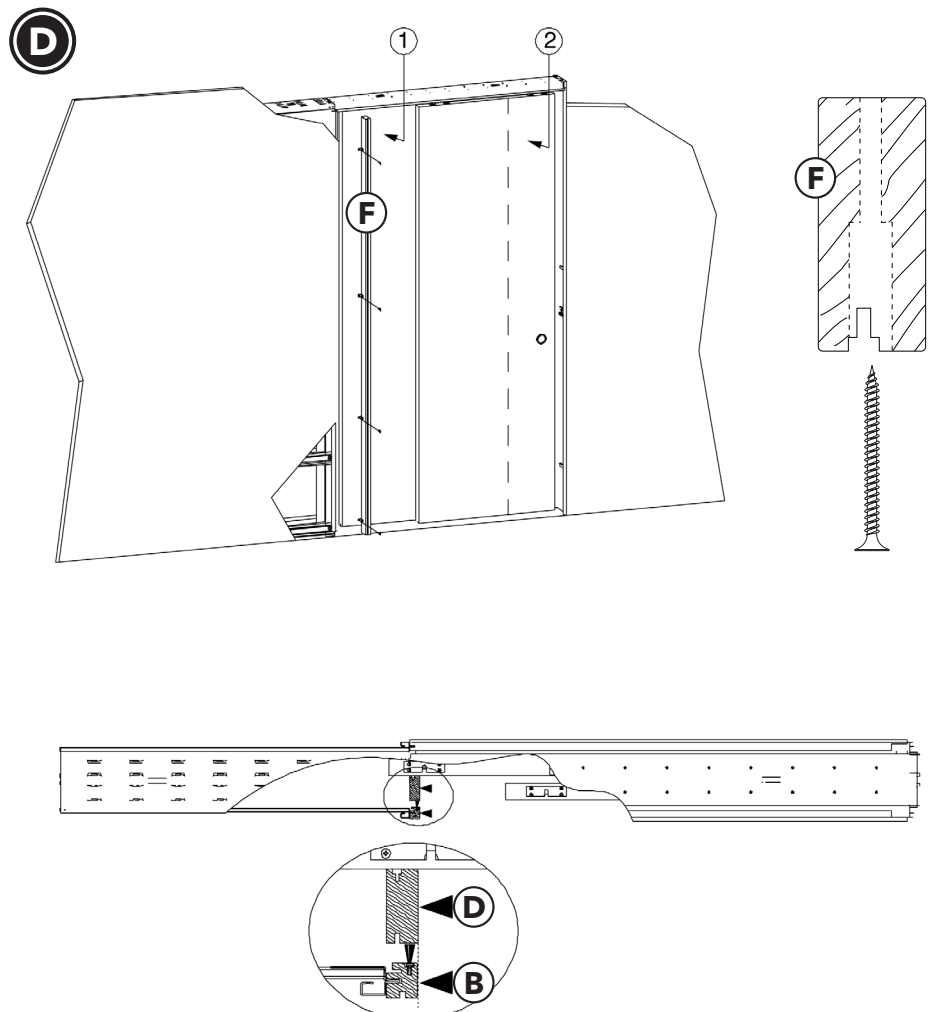


### STAGE 3 CLOSING OFF THE REAR POCKET

Cut one of the supplementary Jambs (D) to the exact height of the door. Close the doors fully ensuring the lead door is fully into the recess of the door post.

Carefully mark on the rear door the position opposite the Pocket Entrance Jamb brushes. Remove the rear door and fix the piece of the Supplementary Jamb (D) you have just cut to the door using screws (H) provided at the point you marked, lining up the brushes with the leading edge of the jamb.

Re-install the rear door remembering to connect the Synchronisation system if fitted and ensure the doors slide smoothly and the lead door is lined up with the recess in the door post



## Fitting Telescopic timber jambs

### STAGE 4 TOP HORIZONTAL JAMBS (C)

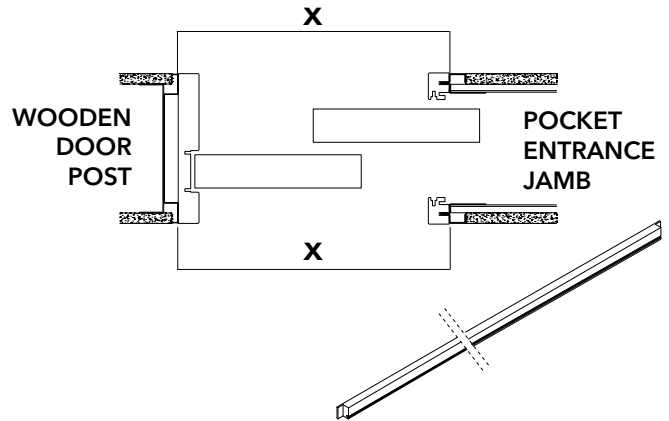
**E**

Both of the Top Head Jambs need to be cut to the measurement X which is from the rear of the door post to the farthest side of the Split Jambs HOWEVER it is important you identify which of these is for the leading door side and which is for the rear door side so you cut different ends.

You should bear in mind that the end you cut will rest on the shoulder of the face jamb and the rabbeted end matches up to the rabbeted end of the Split Jambs with the brush routing towards the door at the lower end of the jamb.

On the leading door side - see diagram B.

Close the doors ensuring the lead door is fully into the recess in the Face Jamb. Cut the correct Top Head Jamb to this dimension. The cut end fits on the shoulder of the Face Jamb (A) and the rabbeted end on the rabbeted top of the Split Jamb (B), fit suitable brushes and fit in place with silicon and/or screws or pin nails.



On the rear door side  
See diagram B.

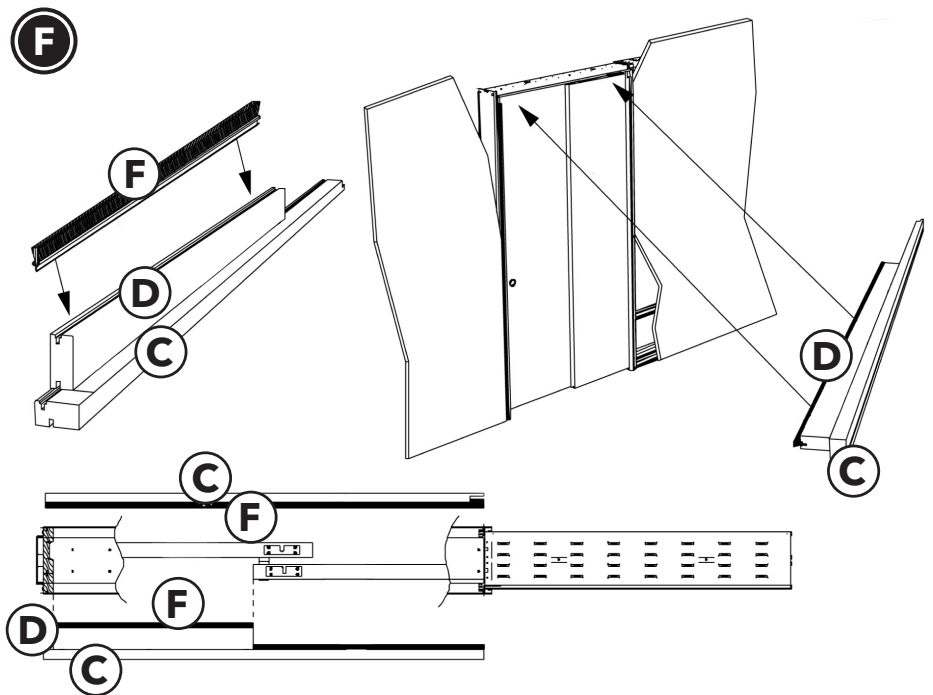
The second Top Head Jamb (C) that is going on the rear door side needs to have another piece of wood attached to it (D) to cover the space above, in front of the rear door.

If you look up to the track on the rear door side with the doors closed you will see a large gap between the rear door and the door post.

Identify which end to cut of the remaining Top Head Jamb (C) and cut to dimension X

Close the doors fully and measure from the front of the door post (A) to the leading edge of the rear door.

Cut this length from the remaining Supplementary Jamb (D) and attach Head on the inside of the Top Head Jamb using the screws provided. Make sure that the routing for the brushes is towards the door.



Fit the appropriate length of brush to the Supplementary Jamb piece and to the Top Head Jamb to which it is attached and fix into position as you did on the other side using silicon/screws/pin nails.



ECLISSE NORTH AMERICA, LLC  
758 West 190TH ST. GARDENA, CA 90248  
info@eclissena.com - www.eclisse.us  
Toll Free: 1-800-614-1474



11/2020 © ECLISSE, all rights reserved. The use, filing and total or partial reproduction, using any mechanical or electronic means, of texts, drawings and pictures contained in this publication is strictly prohibited, unless specifically approved in writing by ECLISSE.  
603046300